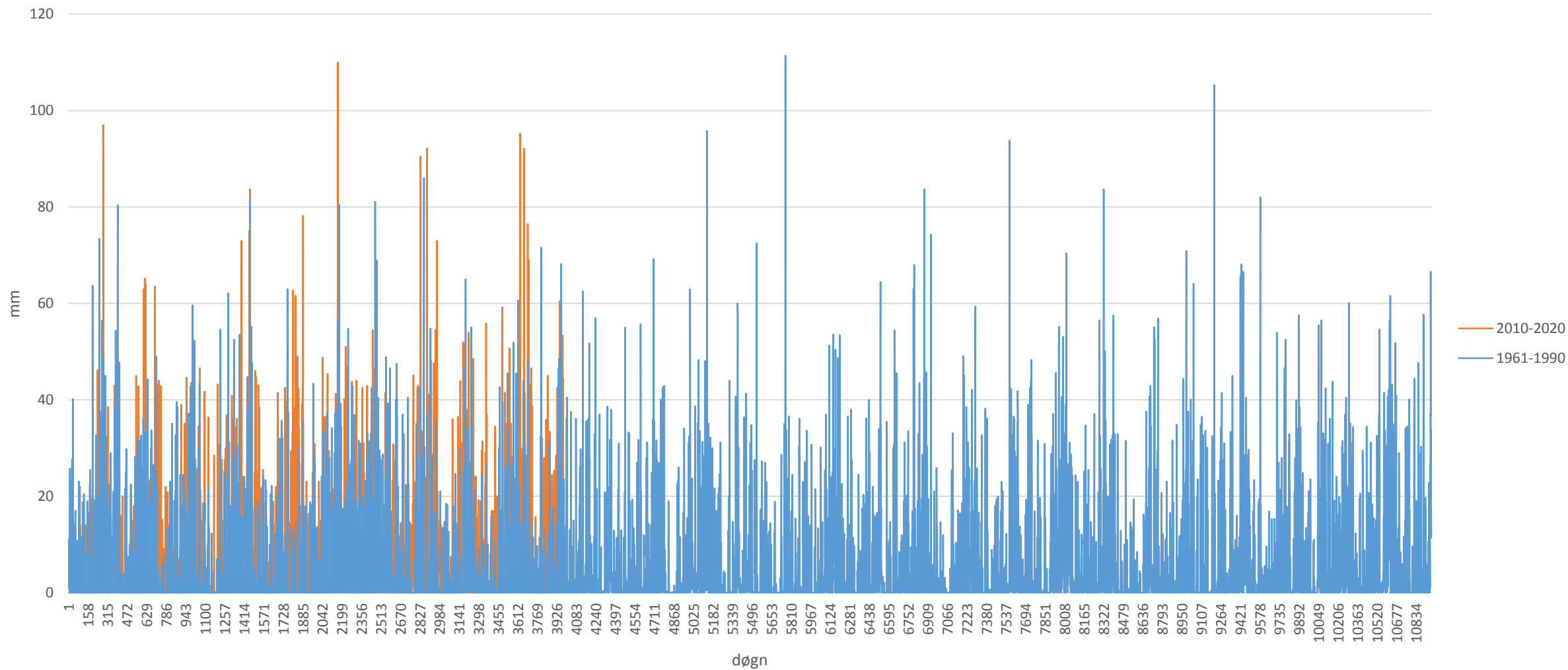
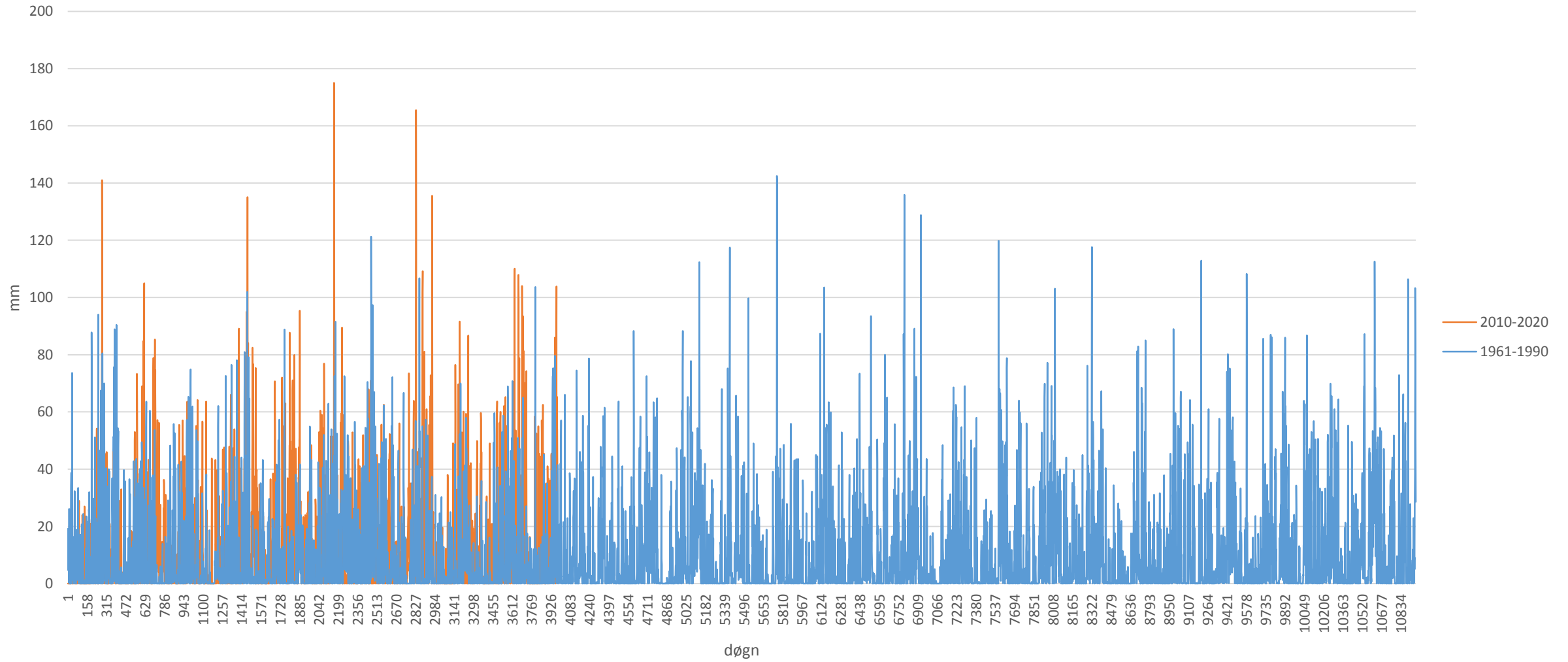


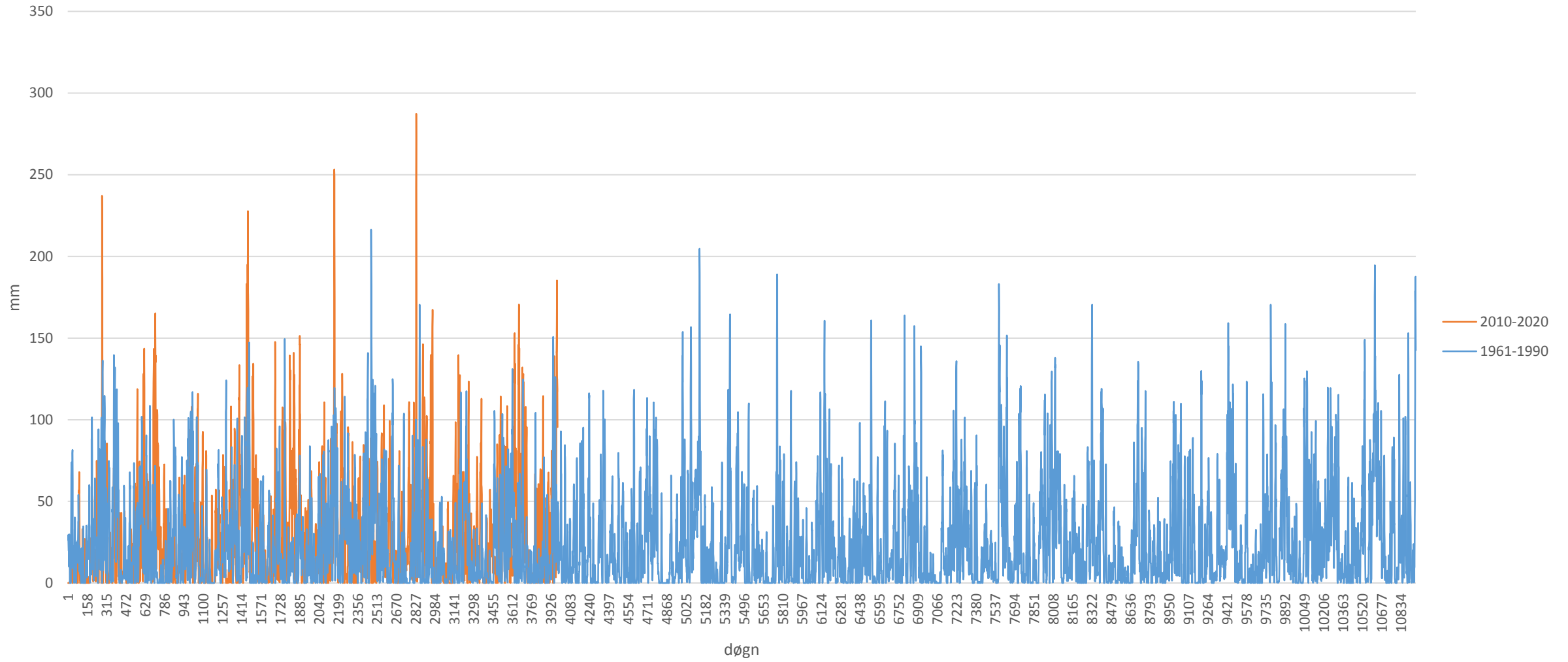
# Døgnetbør Bakke, Flekkefjord



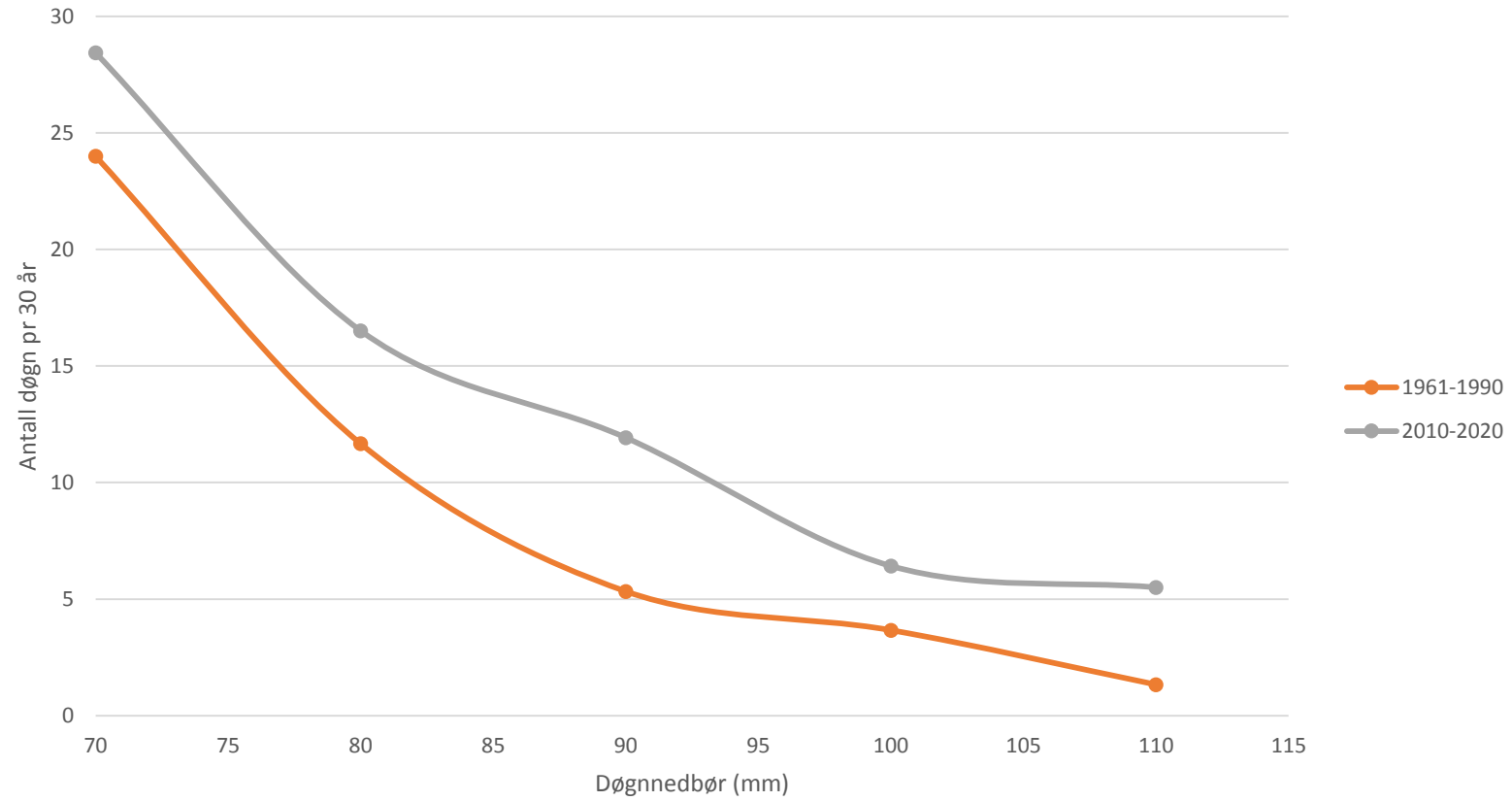
Døgnet nedbør Bakke, Flekkefjord, 2 døgn løpende sum



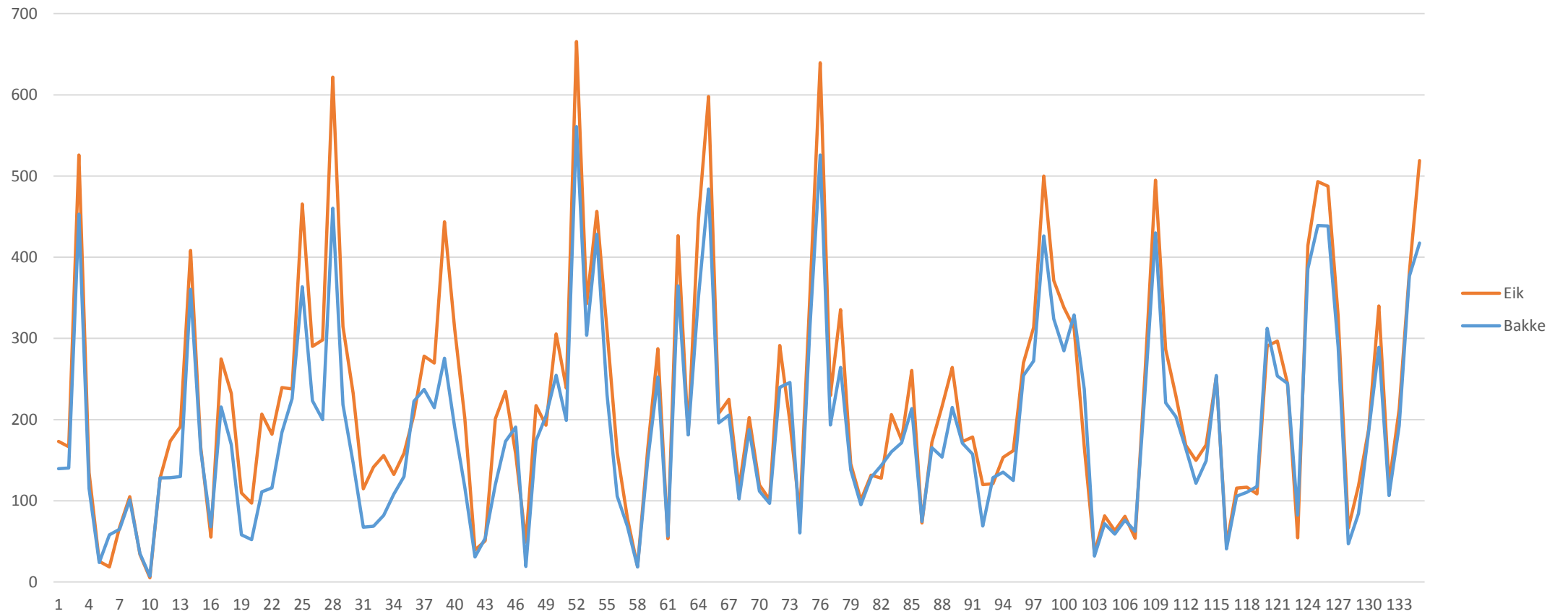
### Døgnetedbør Bakke, Flekkefjord, 5 døgn løpende sum



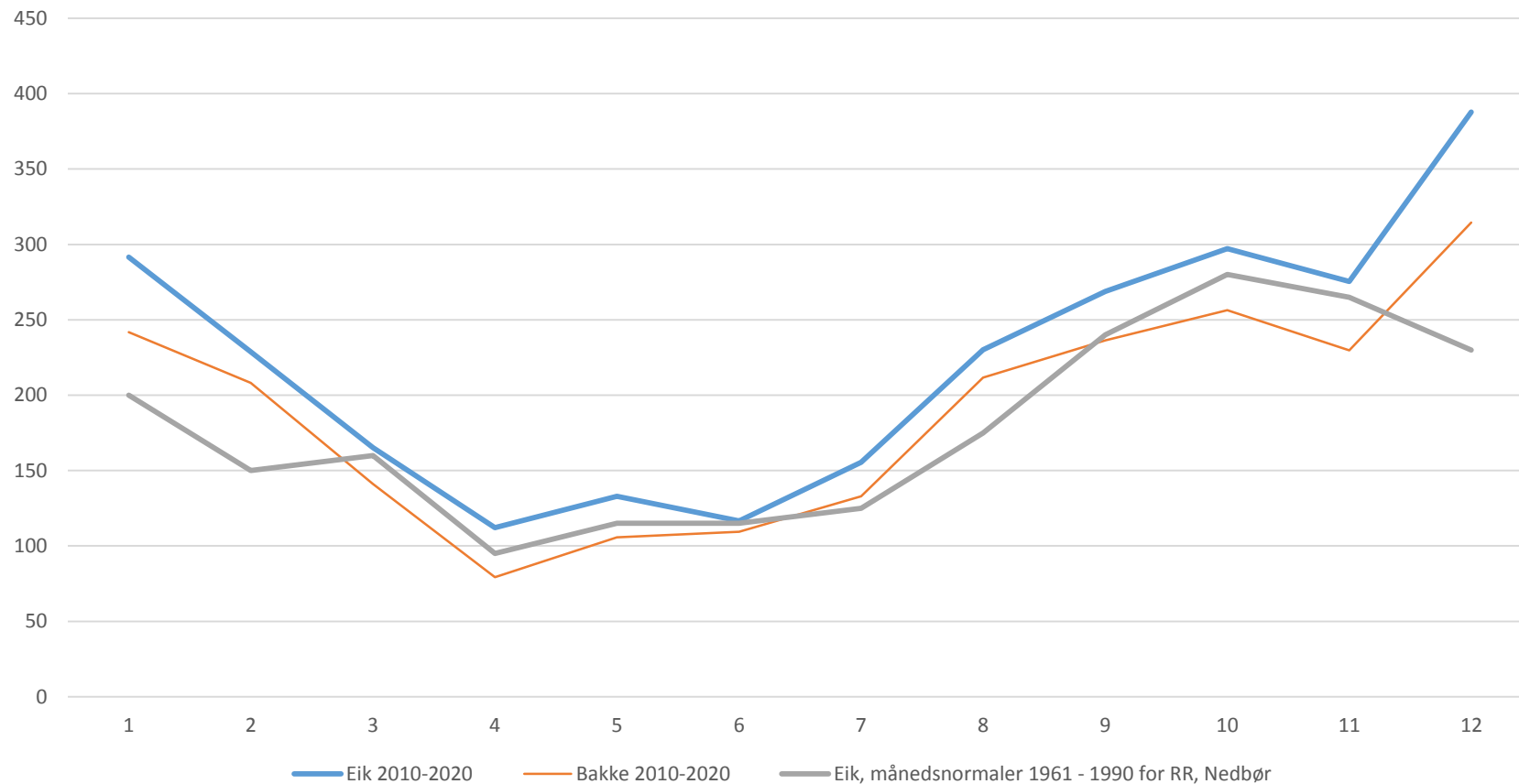
Frekvens 'høynedbør' Bakke



Månedsnedbør sep2009-nov2020

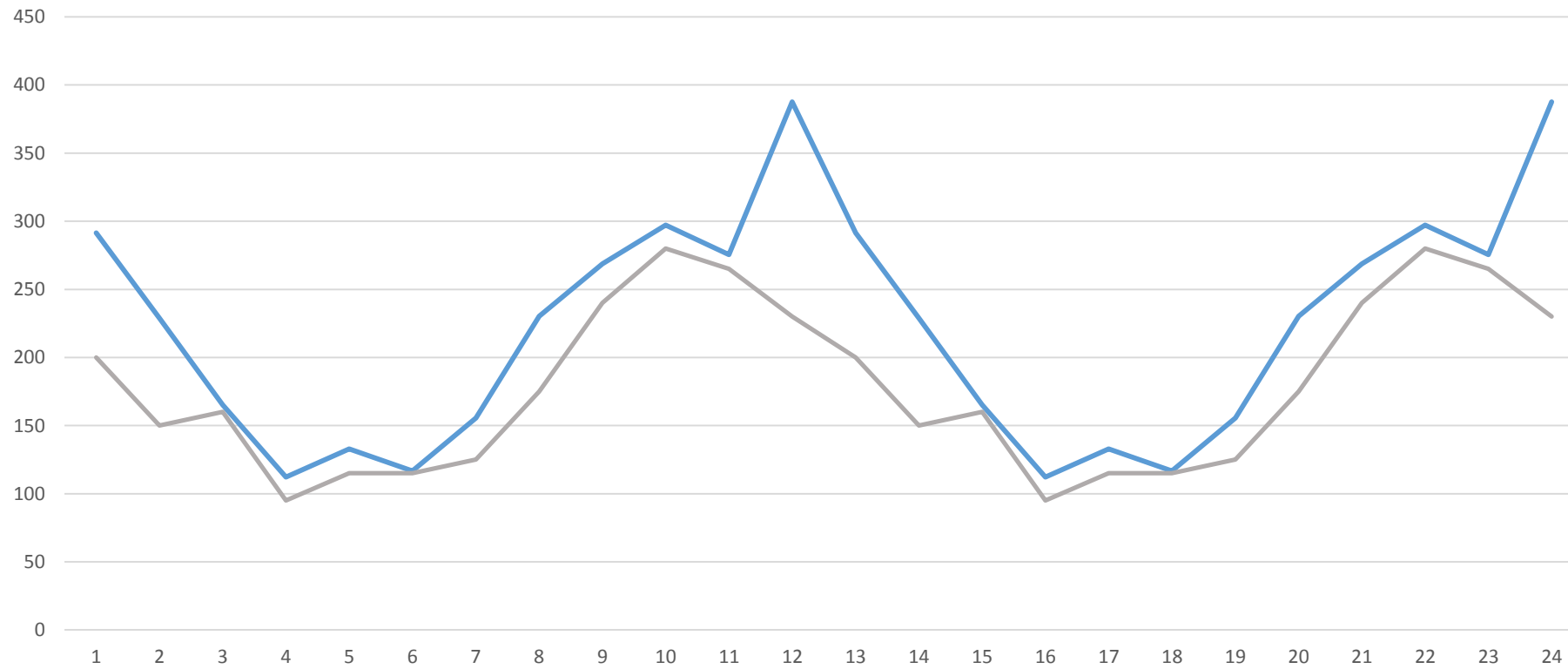


Månedsnedbør Eik og Bakke



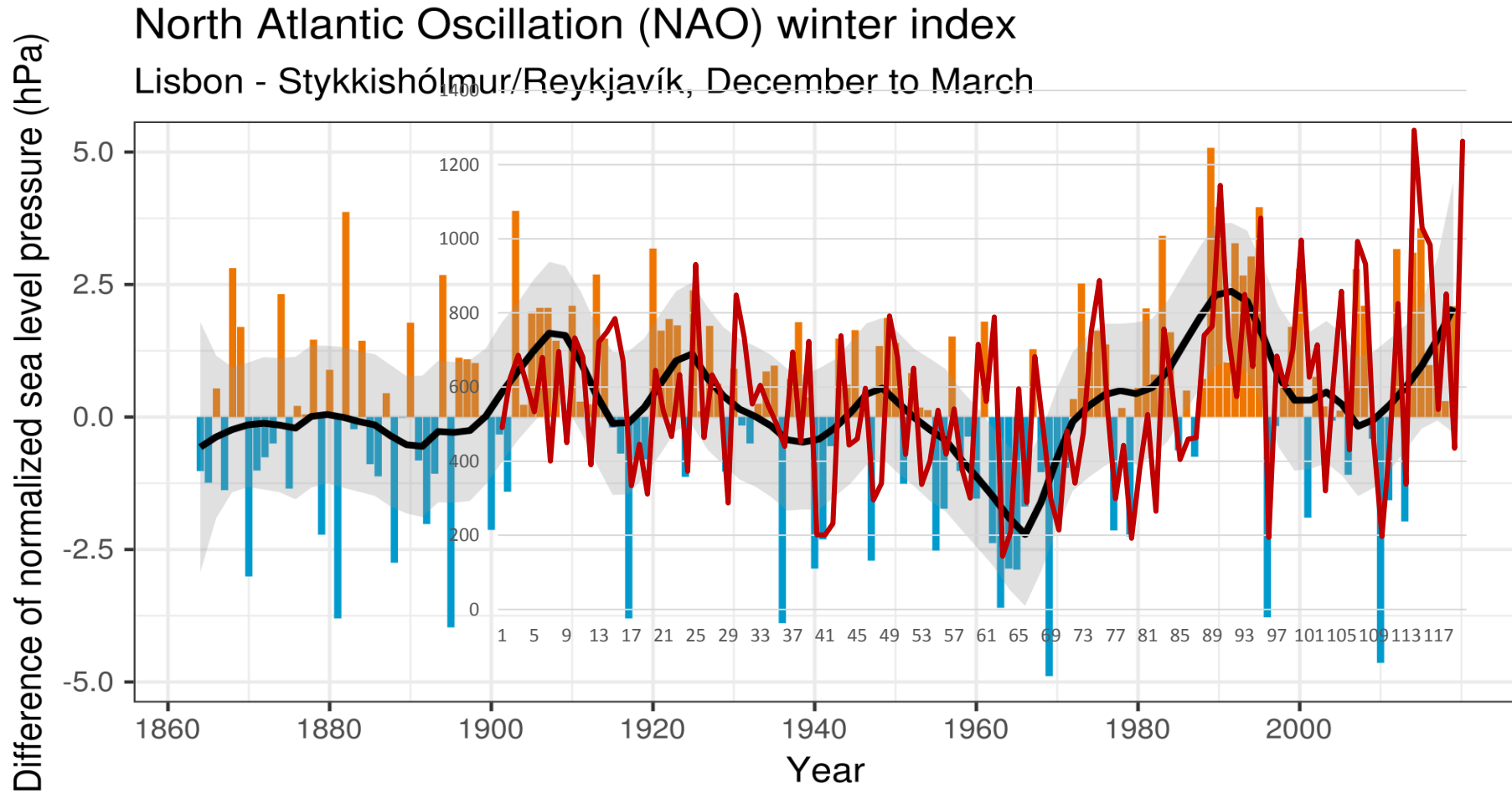
Eik 2010-2020	291	229	165	112	133	117	155	230	269	297	275	388		2662	23.8% økning
Bakke 2010-2020	242	208	141	79	106	109	133	212	236	256	230	314		2267	
Eik 1961-1990	200	150	160	95	115	115	125	175	240	280	265	230		2150	

Eik sentrert desember



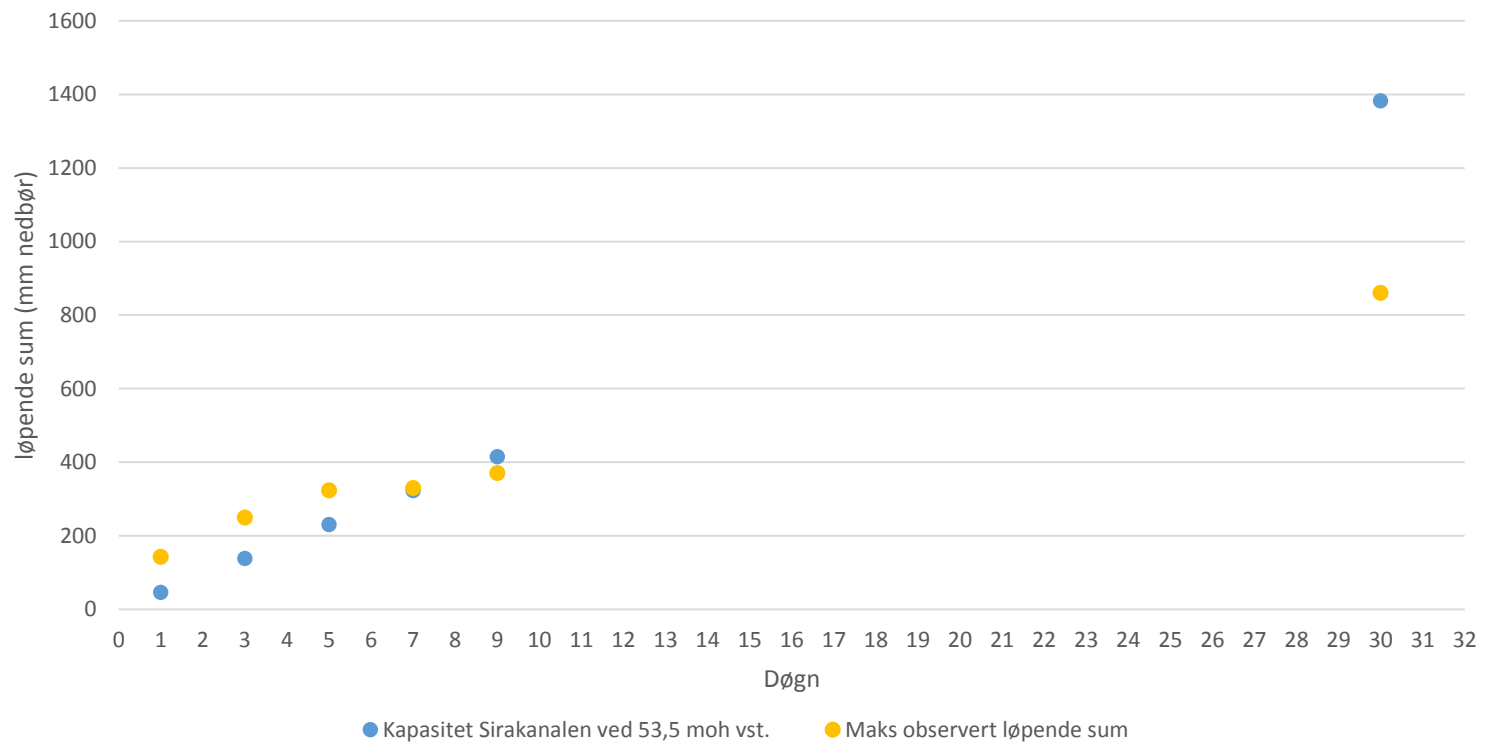
# Vinternedbør Bakke, Flekkefjord vs. NAO

Nedbør des-feb



NAO Index Data provided by the Climate Analysis Section, NCAR, Boulder, USA, Hurrell (2003)  
Updated regularly. Accessed 2020-11-01





	Sirdalsvatn	ca. 1500 km <sup>2</sup> felt		
	Sirakanalen	kapasitet ca. 800 m <sup>3</sup> /s ved 53,5 moh		Maks observert 2010-2020, Eik:
Kapasitet (mm):	1 døgn	46		143
	3 døgn	138		250
	5 døgn	230		323
	7 døgn	323		330
	9 døgn	415		371
	30 døgn	1382		860

NB: ingen magasinering